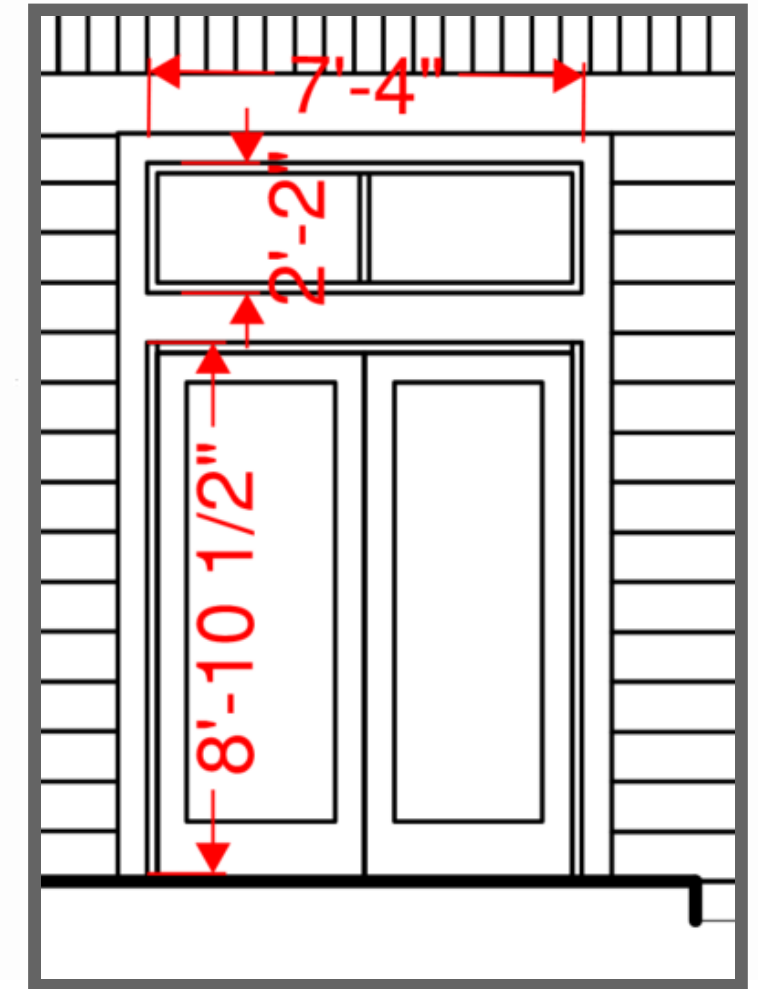
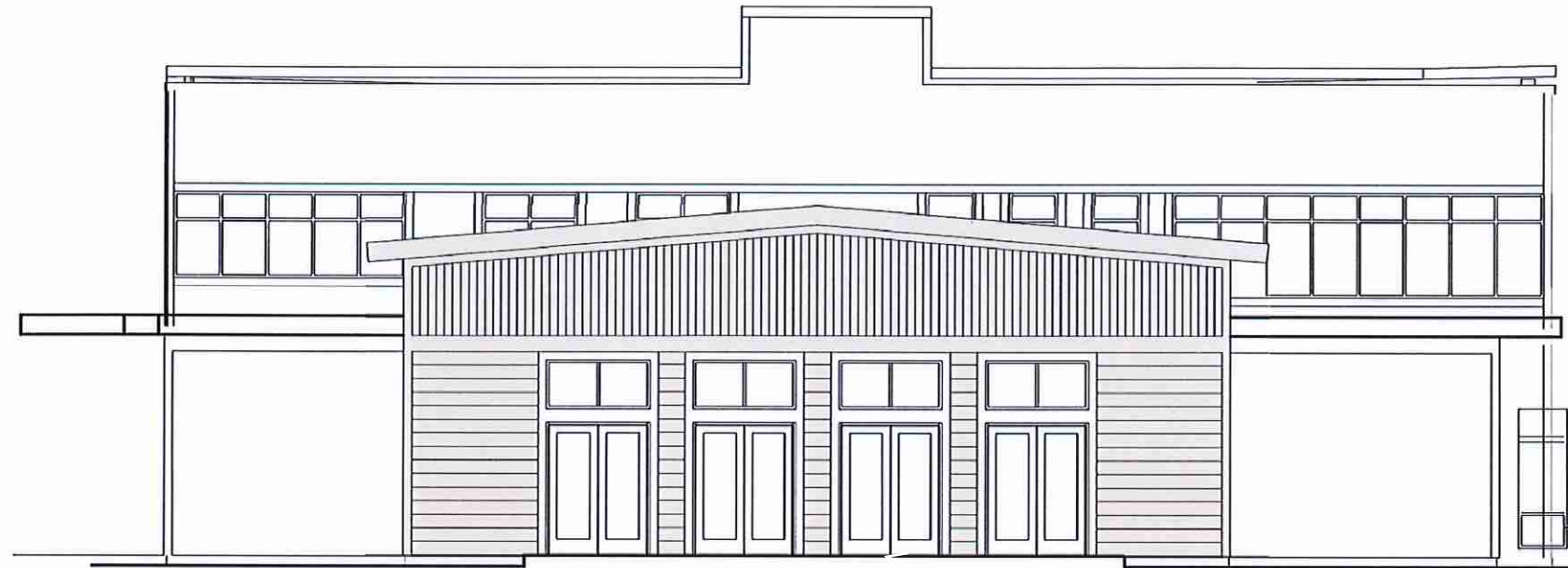


Exterior Elevations

OPTION A



ENLARGED / DIMENSIONED

A-1: Commercial Fiberglass swing doors with integral transom:
 $\$8,200 \times 4 = \$32,800$, plus 2 exit devices (2 openings \times $\$2000$) = **$\$36,800$**
Pricing based on Sturgis Platinum, Jeldwen or similar.

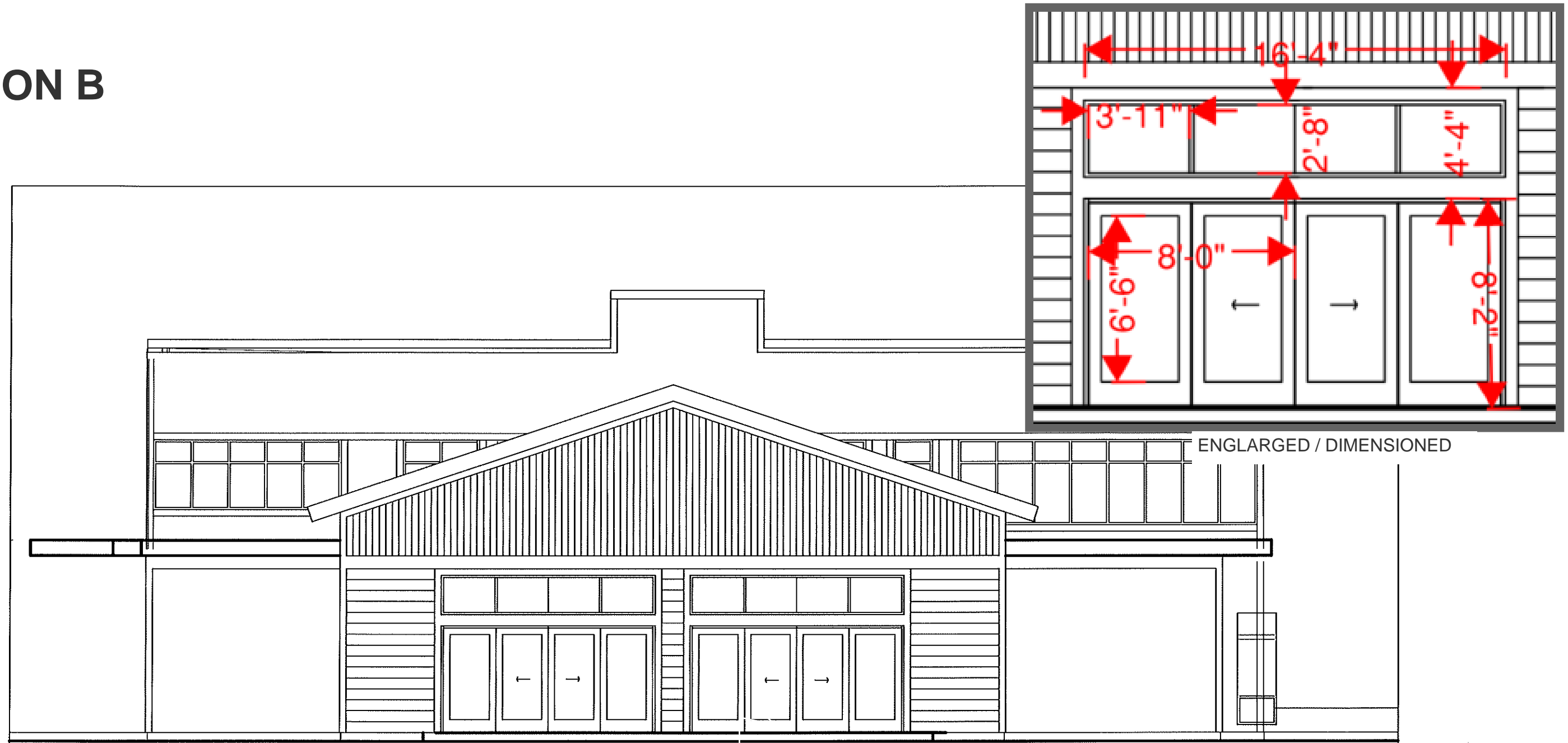
A-2: Commercial aluminum storefront thermally broken swing doors with 1" low-e glass:
 $\$20,700 \times 4 = \$82,800$, plus 2 exit devices (2 openings \times $\$2000$) = **$\$86,800$**
Pricing based on Old Castle, Arcadia, Fleetwood, Efco, Architectural Aluminum or similar.

OPTIONS:

Add $\$2,000$ for panic exit devices (per opening)

Add $\$9,500$ for surface applied low voltage operator and push buttons (per opening)

OPTION B



B-1: Commercial Fiberglass Gliding Doors with separate fixed glass transom:

$\$19,400 \times 2 = \$38,800$

Pricing based on Sturgis Platinum, Jeldwen or similar.

B-2: Commercial aluminum storefront bi-parting manual stile & rail door system with 1" low-e glass and heavy-wall tube support for integral transom:

$\$33,000 \times 2 = \$66,000$

Pricing based on Old Castle, Arcadia, Fleetwood, EfcO, Architectural Aluminum or similar.

OPTION C



C-1: Commercial Fiberglass swing doors with integral transom & fixed windows:
 $\$8,200 \times 2 = \$16,400$, plus 2 exit devices (2 openings x \$2000), plus windows (6 x \$1700) = **\$30,600**
Pricing based on Sturgis Platinum doors / Sturgis Windgate windows, or similar.

C-2: Commercial aluminum storefront thermally broken swing doors with 1" low-e glass:
 $\$20,700 \times 2 = \$41,400$, plus 2 exit devices (2 openings x \$2000), plus windows (6 x \$3100) = **\$64,800**
Pricing based on Old Castle, Arcadia, Fleetwood, EfcO, Architectural Aluminum or similar.